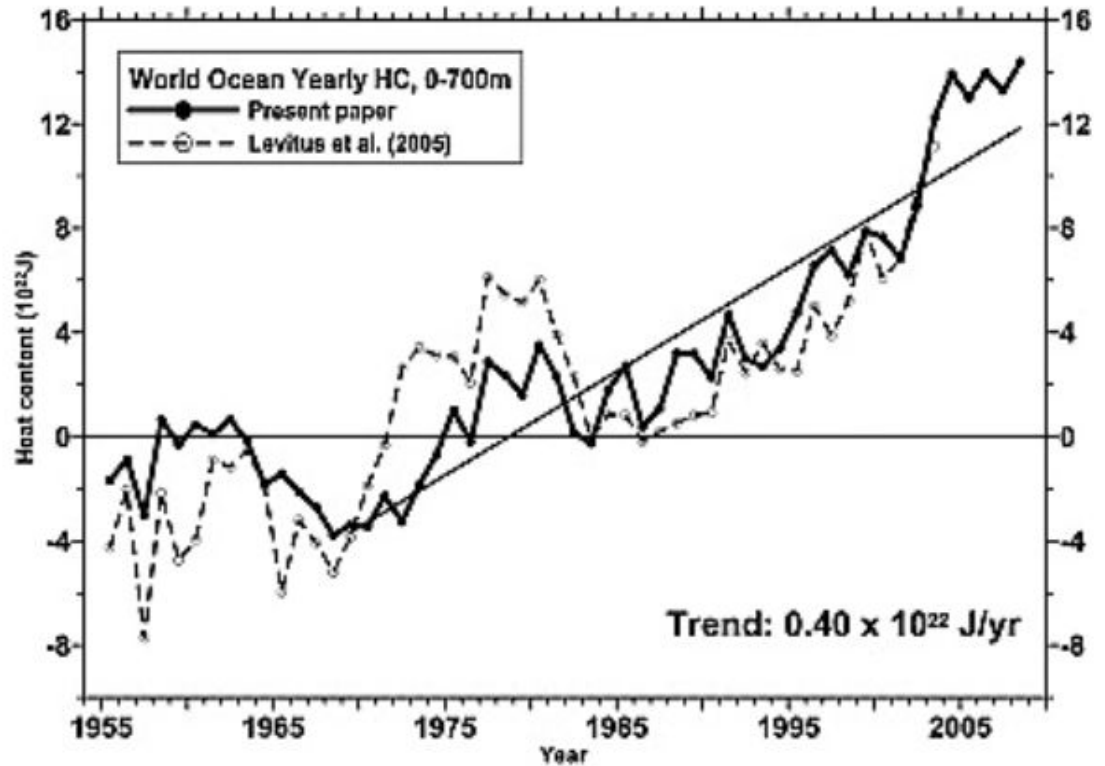




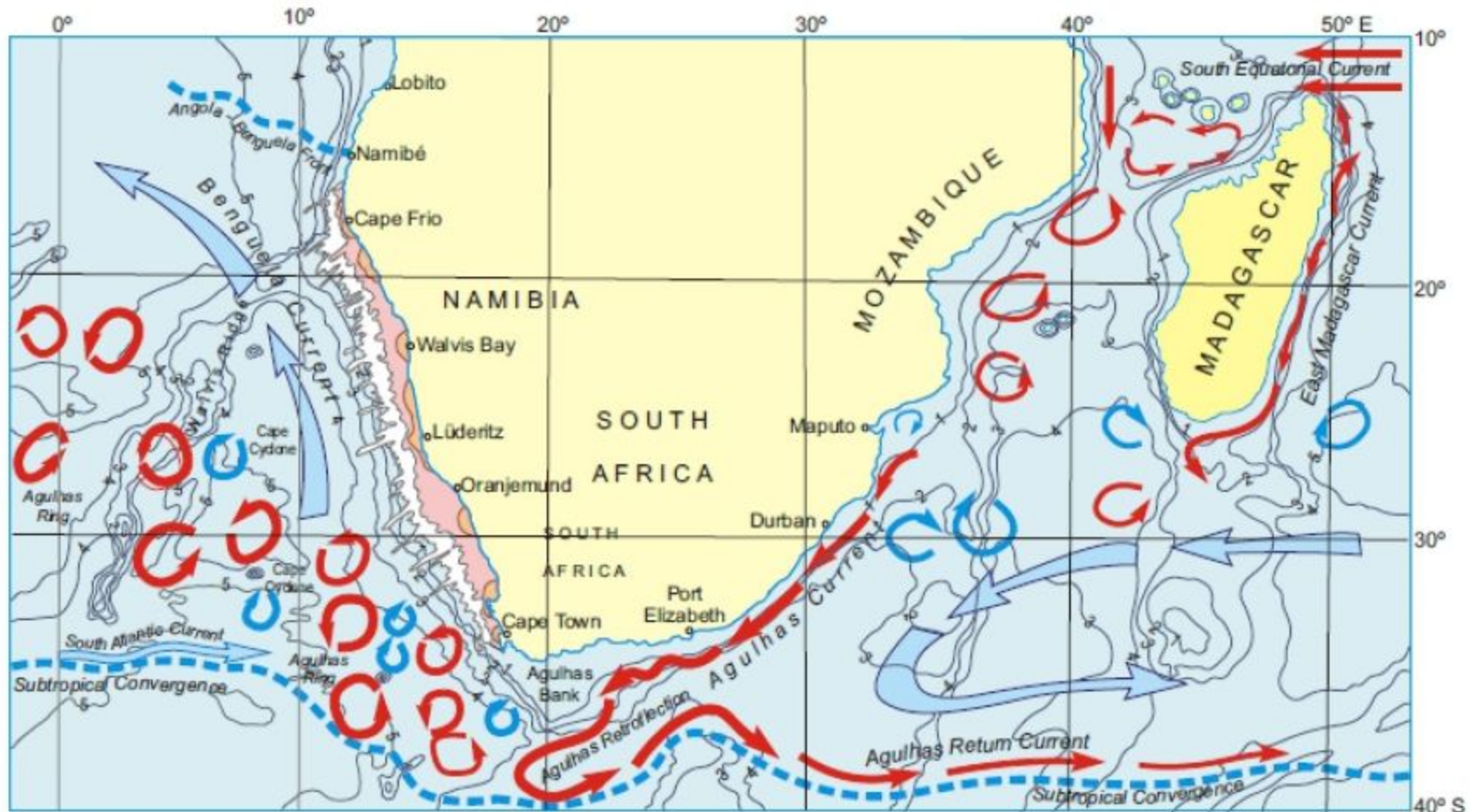
Variabilidade da Profundidade da Camada Isotérmica no Atlântico Tropical

Erik Zarko M. Solha, Ana Paula M. Krelling

Introdução



Levitus et al., 2009.

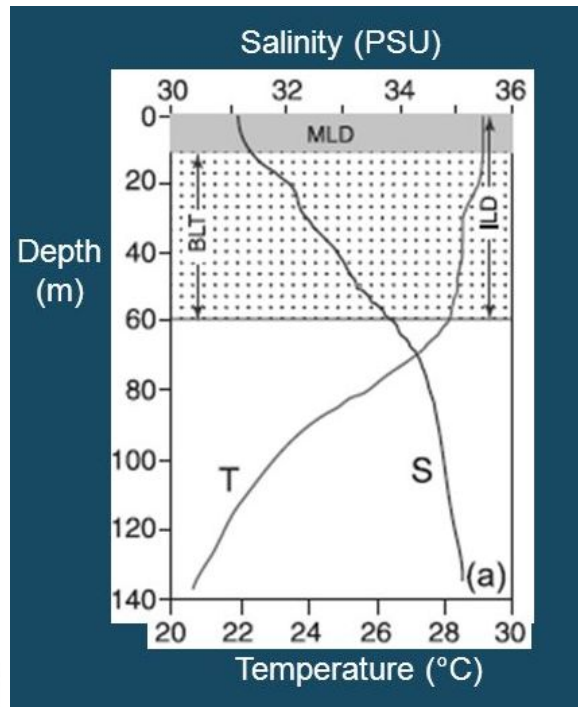
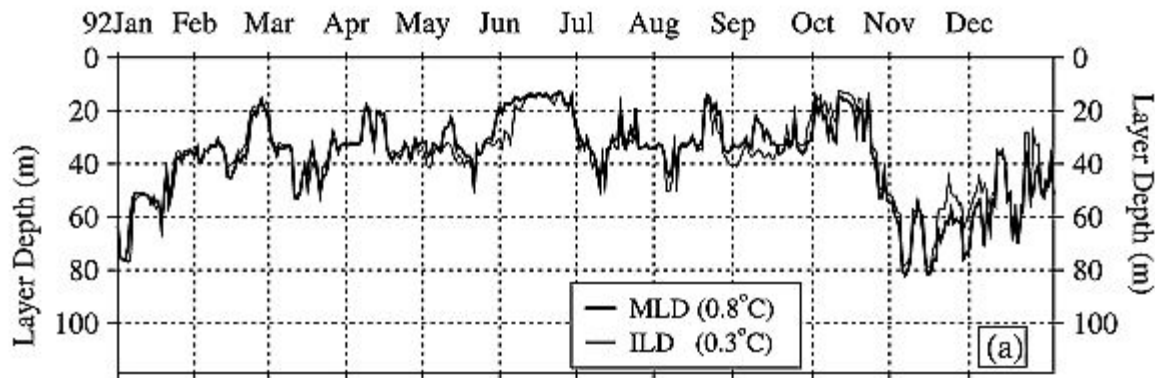


Morris et al., 2017

Objetivo

Construir base de dados da MLD com dados ARGO

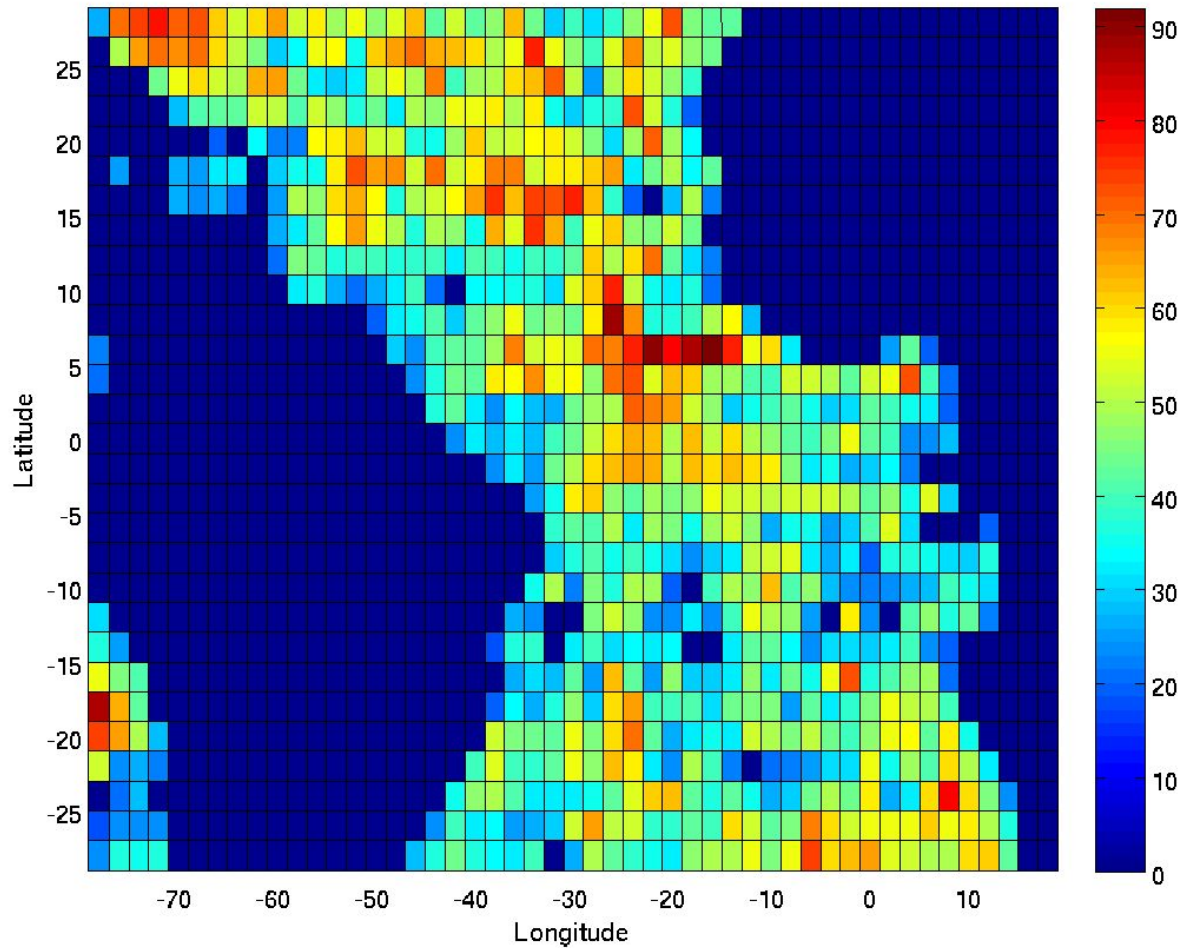
MLD \approx ILD
(Kara et. al., 2003)



Thadathil et al., 2007.

PORÉM...

ARGO 2006-2016





Objetivo

Construir base de dados da MLD com dados ARGO (usando o WOA como complemento).

Adicionar variabilidade no WOA.

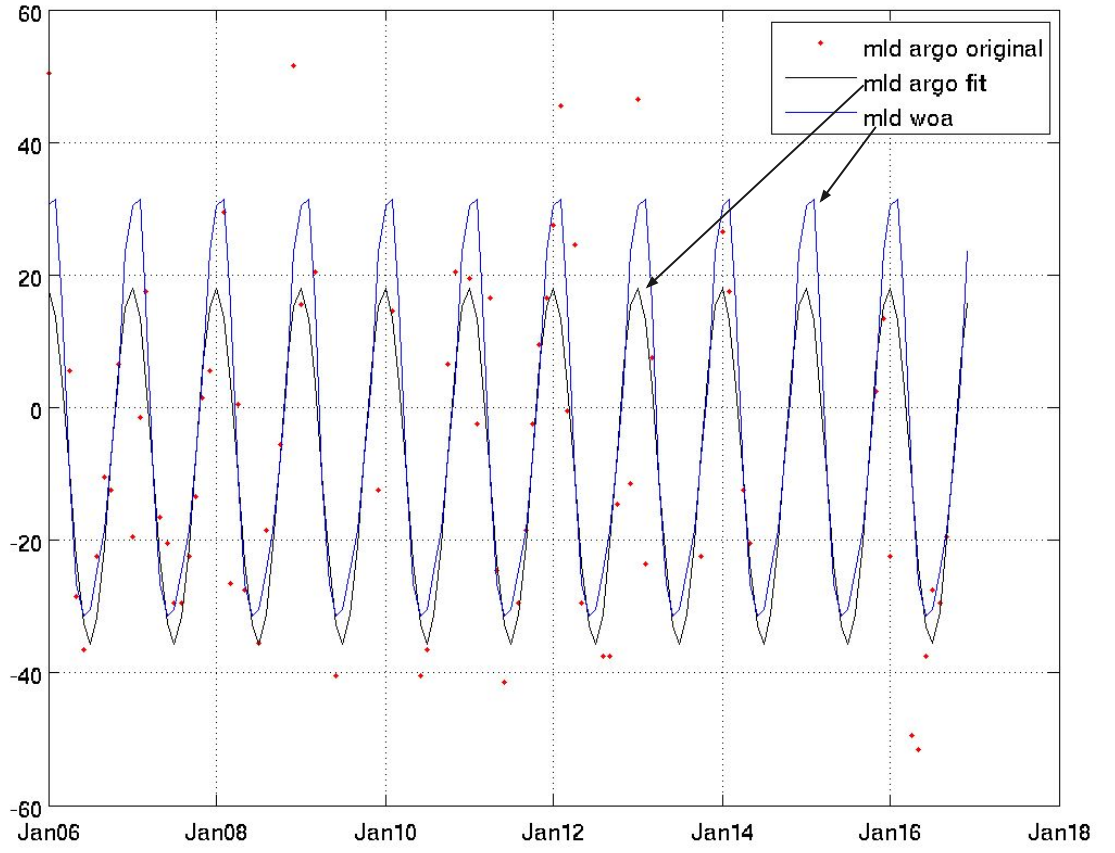


Metodologia

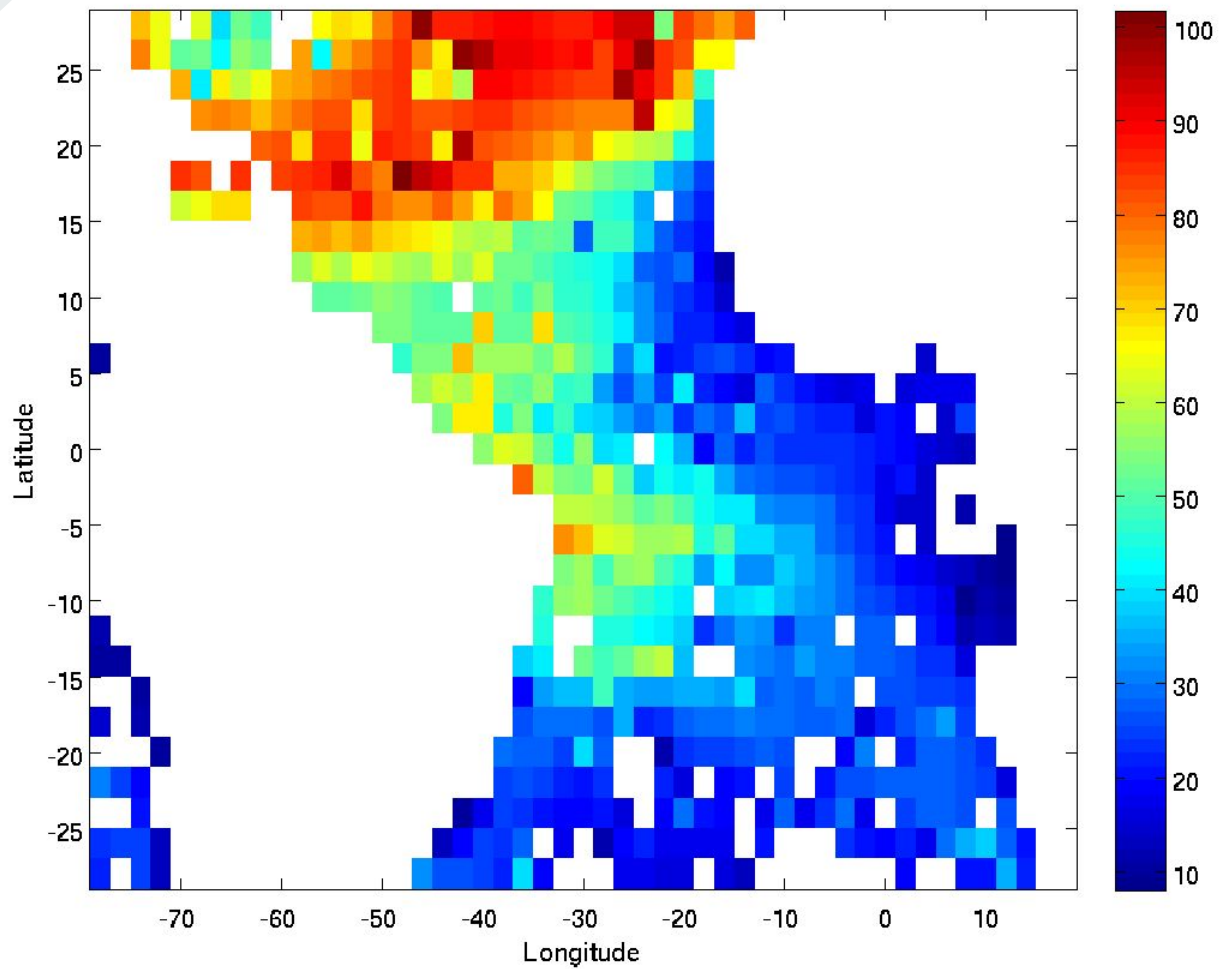
- Serie Temporal: 2006~2016
- Resolução: Mensal
- Atlântico Tropical: 29N - 29S;
- Resolução Espacial: 2° LON x LAT;
- Método de Determinação da ILD -> $\Delta 0.3^{\circ}\text{C}$;
- Interpolação da série de anomalias do ARGO com anomalias do WOA
- Filtro Hanning de 3 pontos.



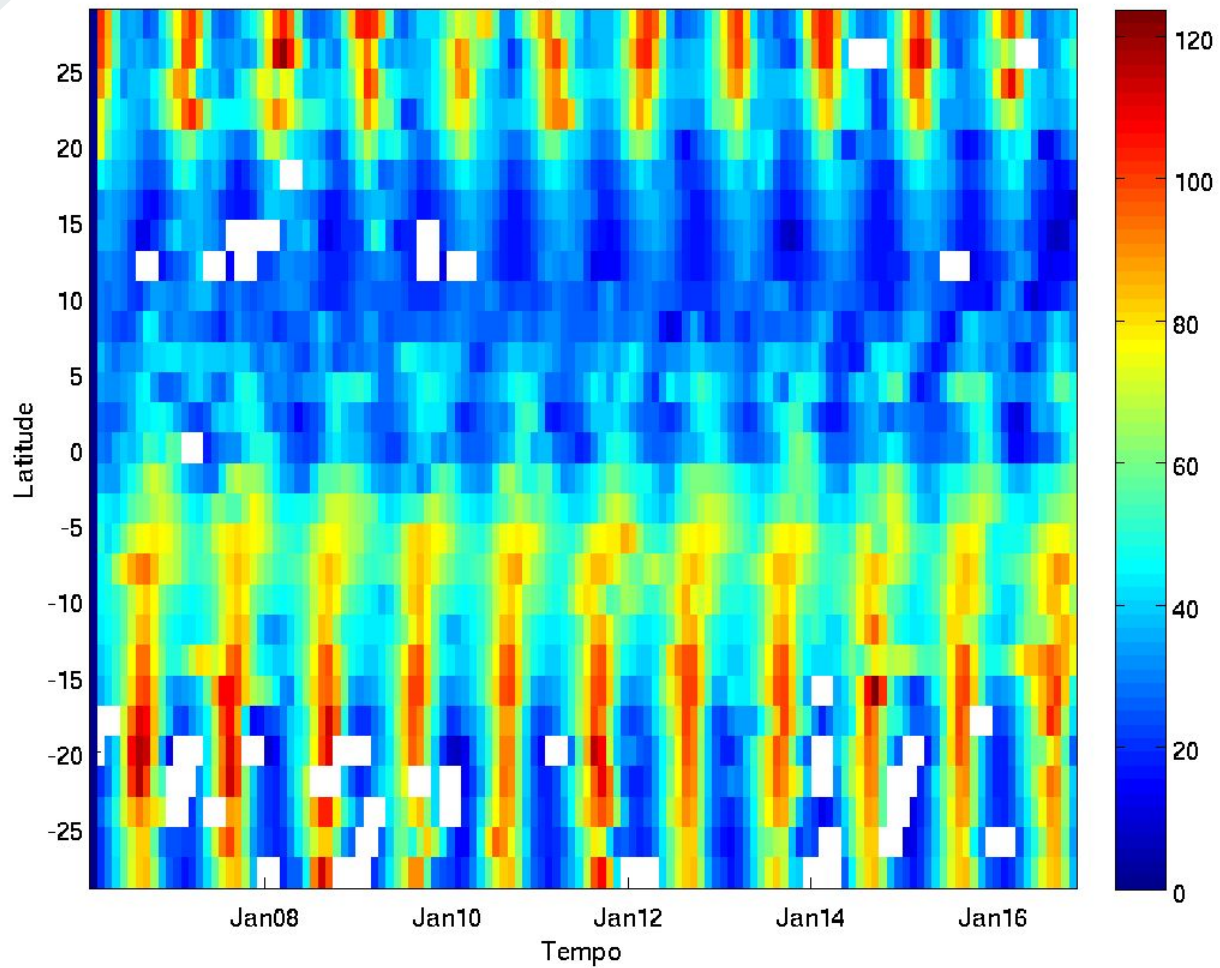
Resultados



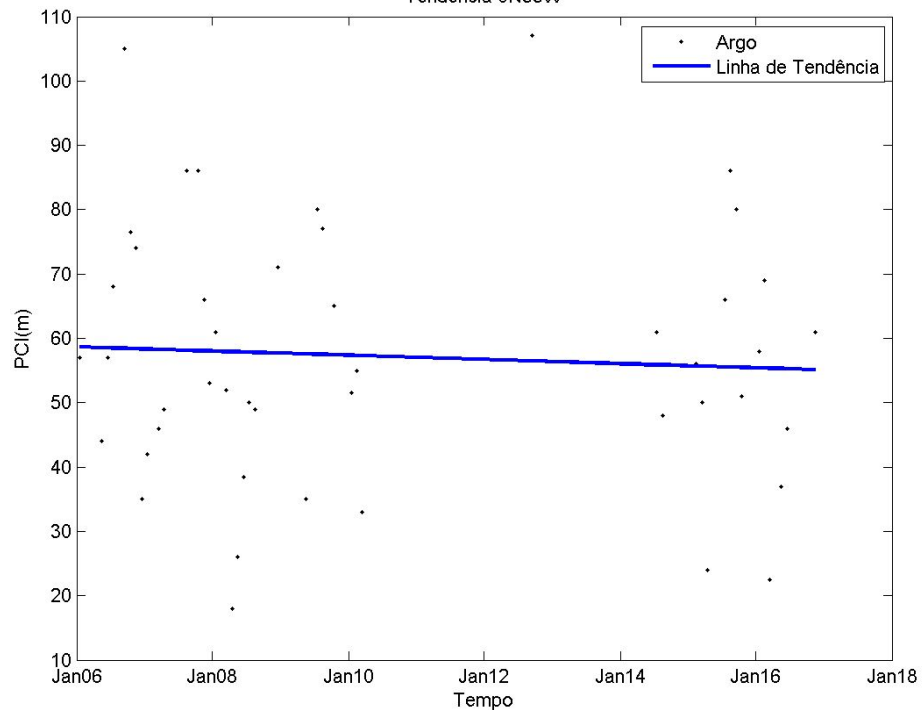
MLD Jan07



Longitude 25W

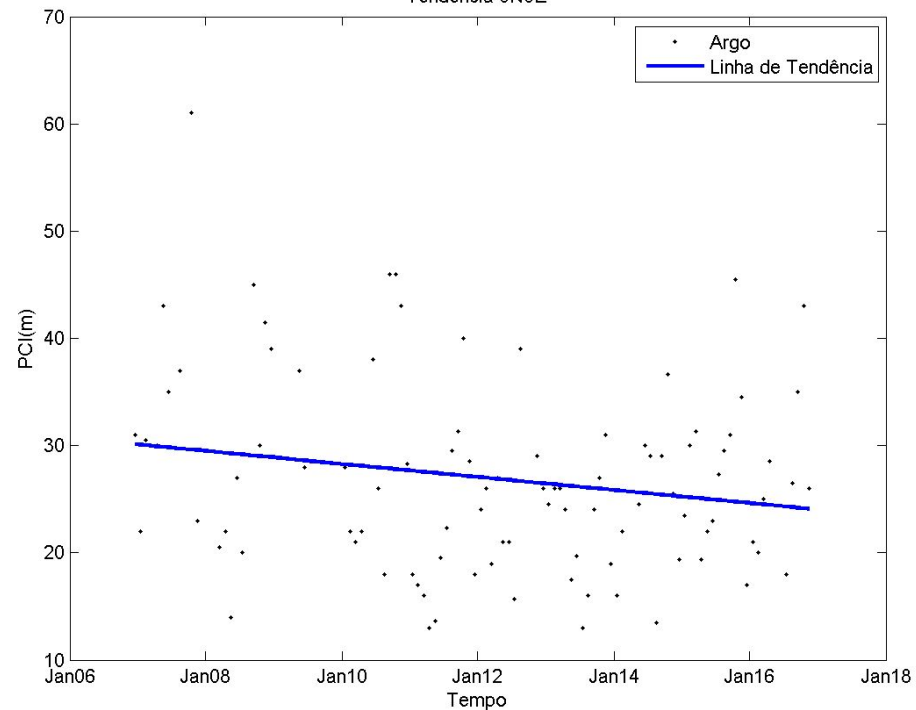


Tendência 0N35W



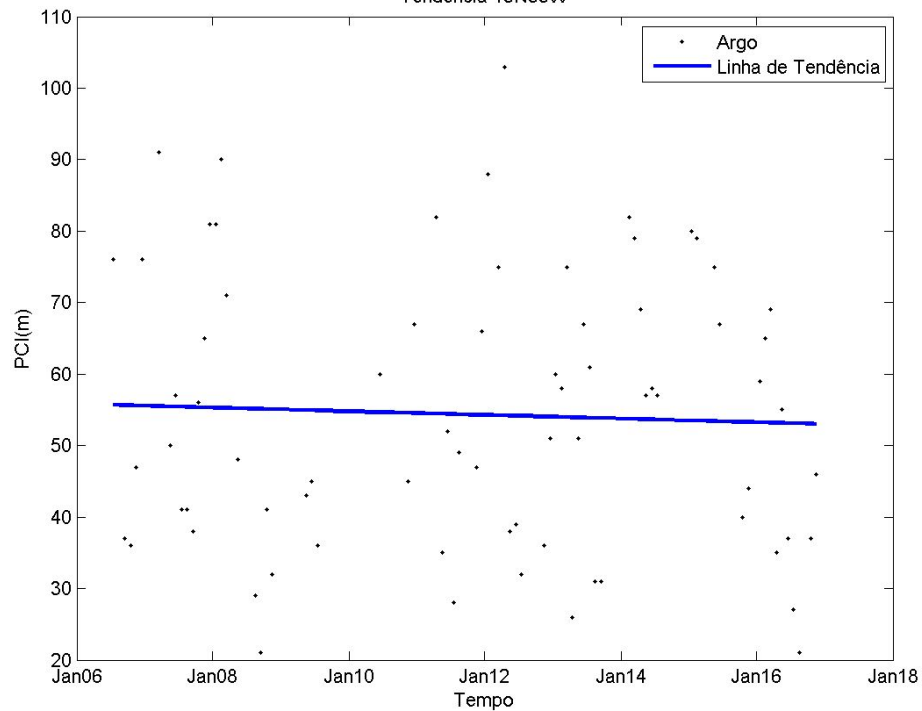
Coef. angular = -0.00088889

Tendência 0N0E



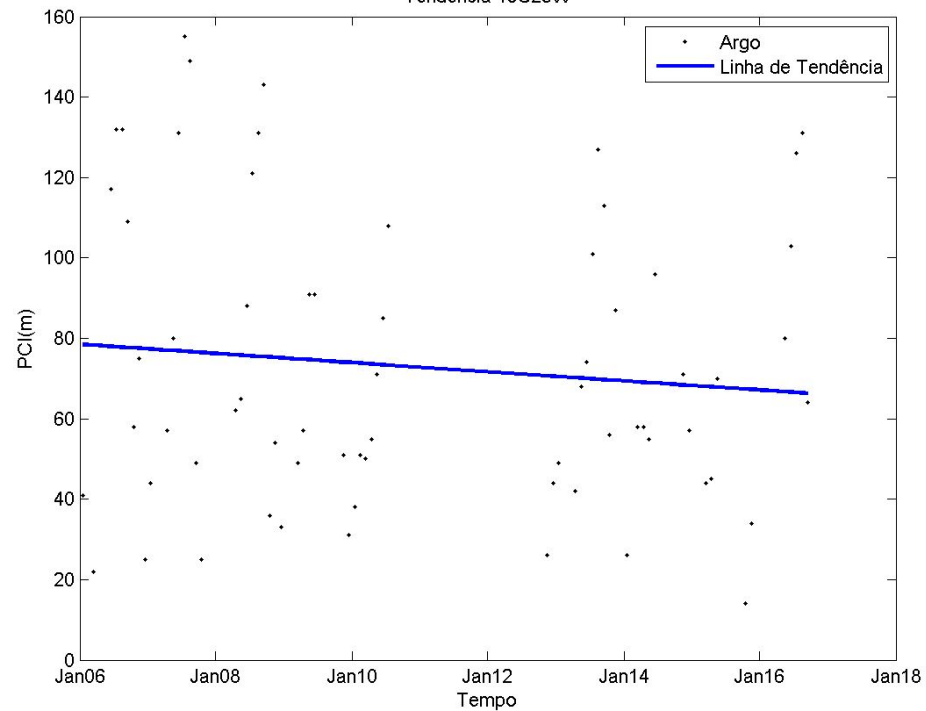
Coef. angular = -0.00166458

Tendência 15N35W



Coef. angular = -0.00070284

Tendência 19S25W



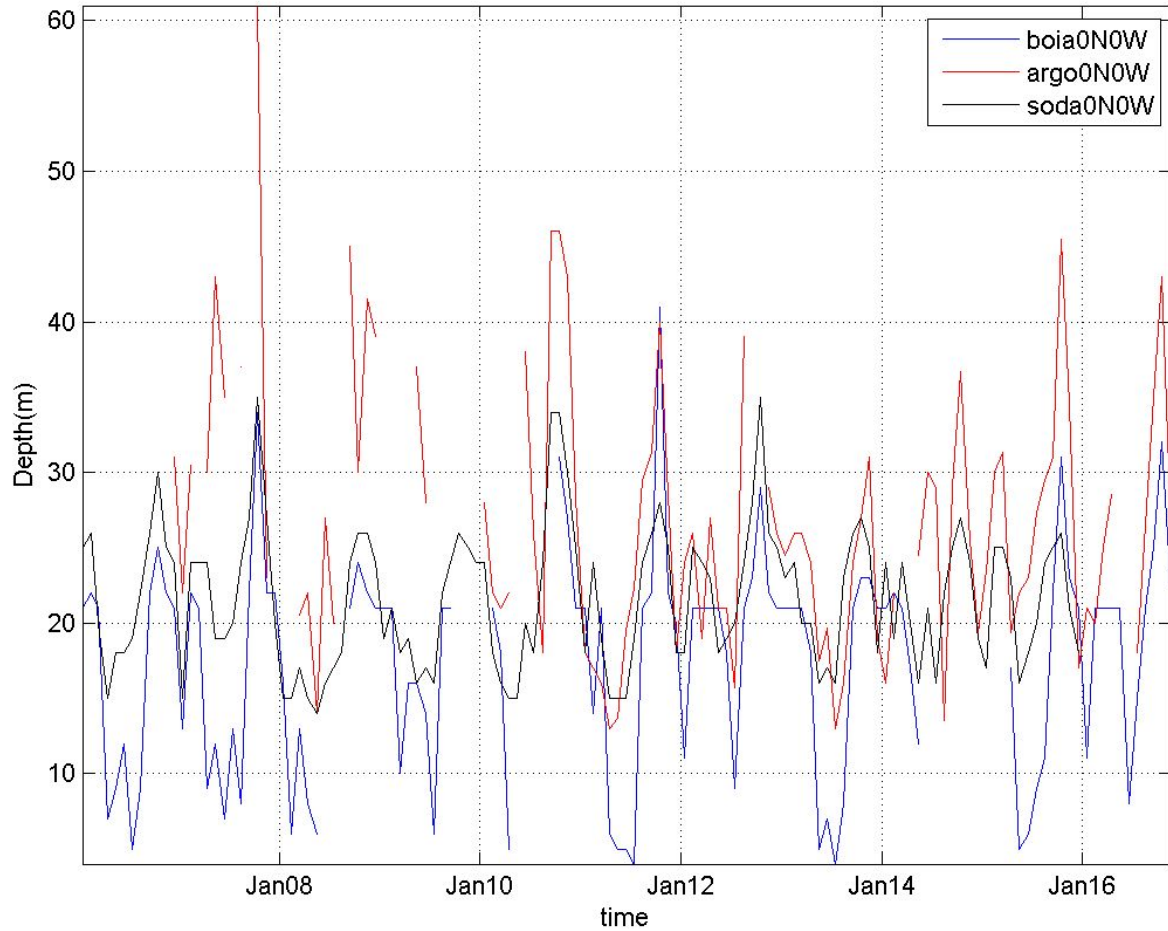
Coef. angular = -0.00312205



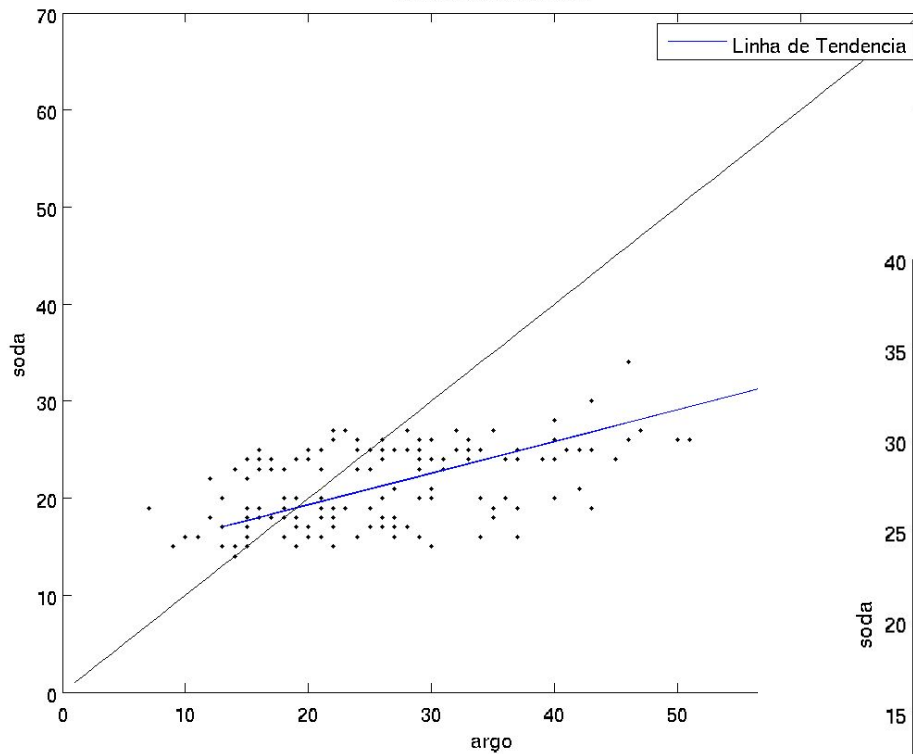
Conclusões

- Resolução Espacial x Dados in situ;
- Visualização de Variabilidades;
- Possível utilização de dados de reanálise.

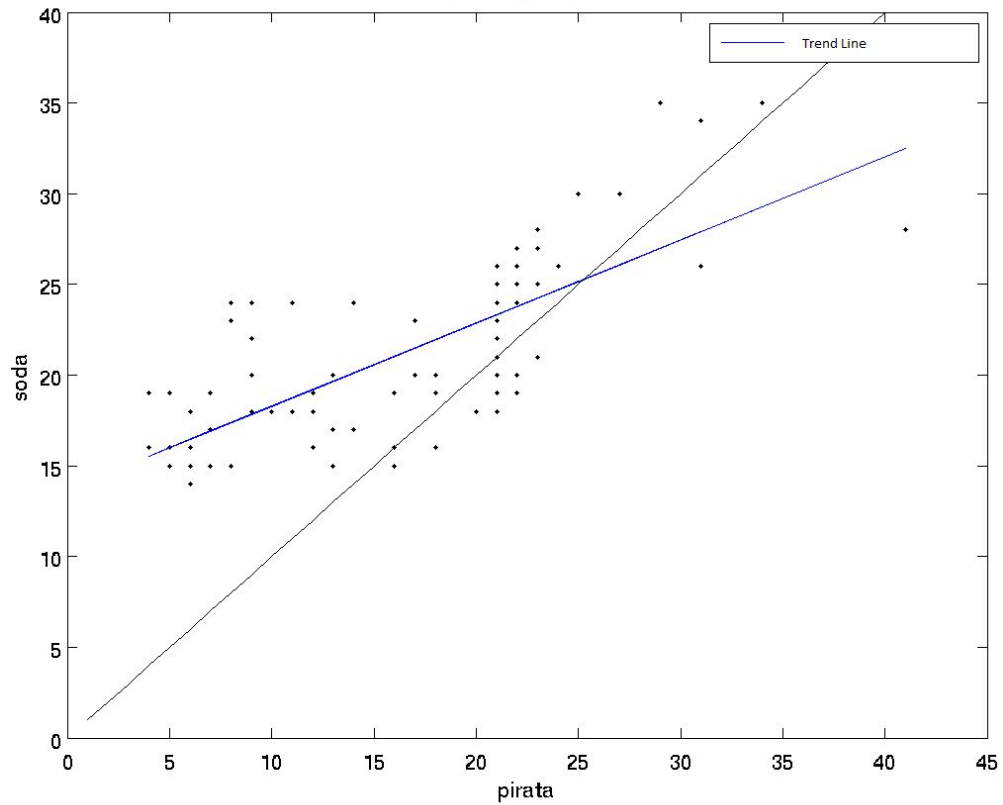
MLD



ARGO x SODA 0N0E



PIRATA x SODA 0N0E





UNIVERSIDADE FEDERAL DO CEARÁ



Obrigado!

